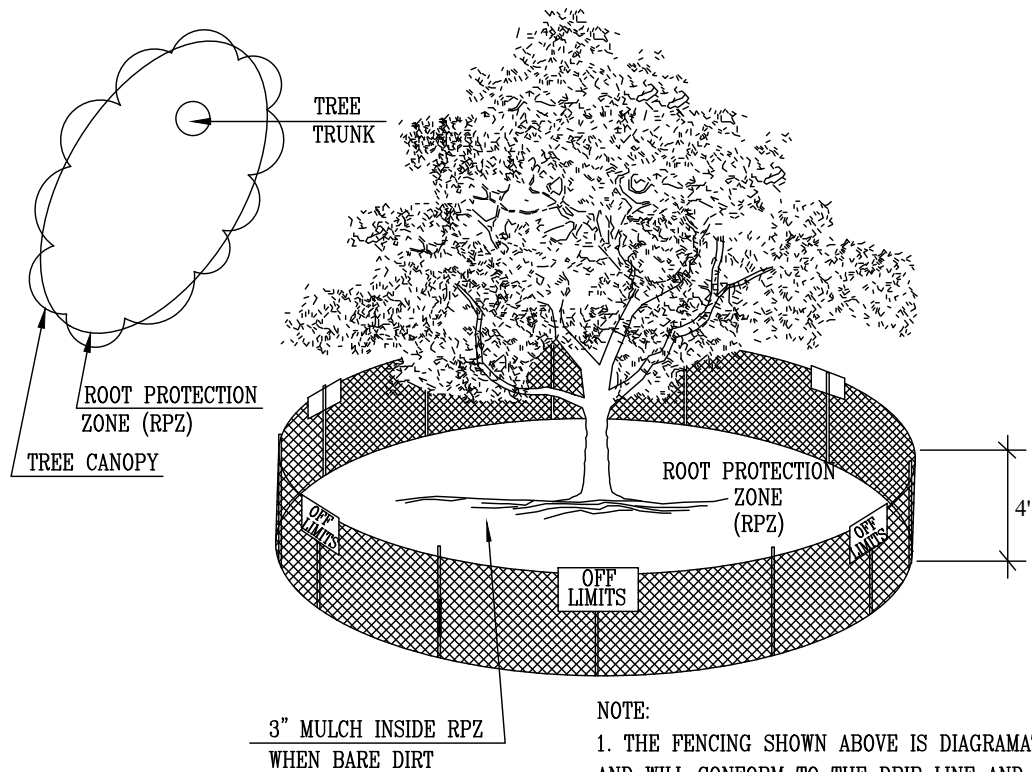
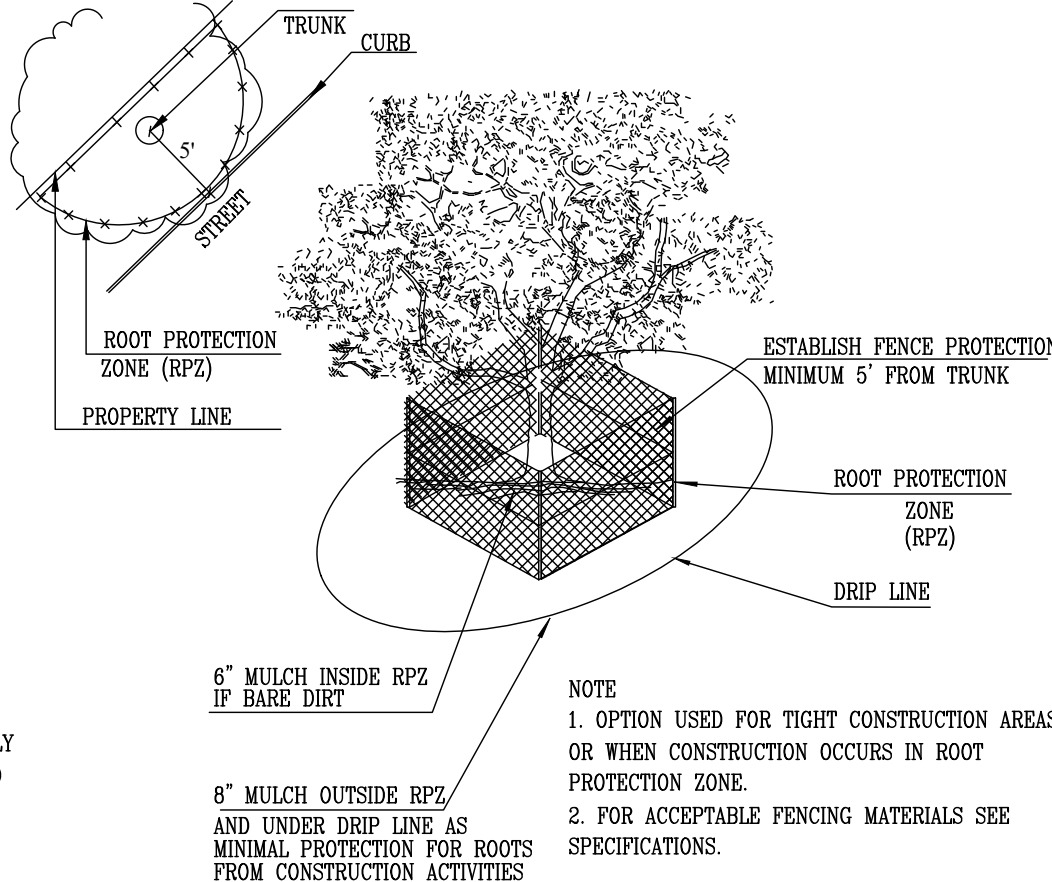


REMOVED TREES				
POINT #	SPECIES	SIZE	MULTI-TRUNK	SIZE CLASS
21	BLACK WILLOW	30.5	Y	HERITAGE



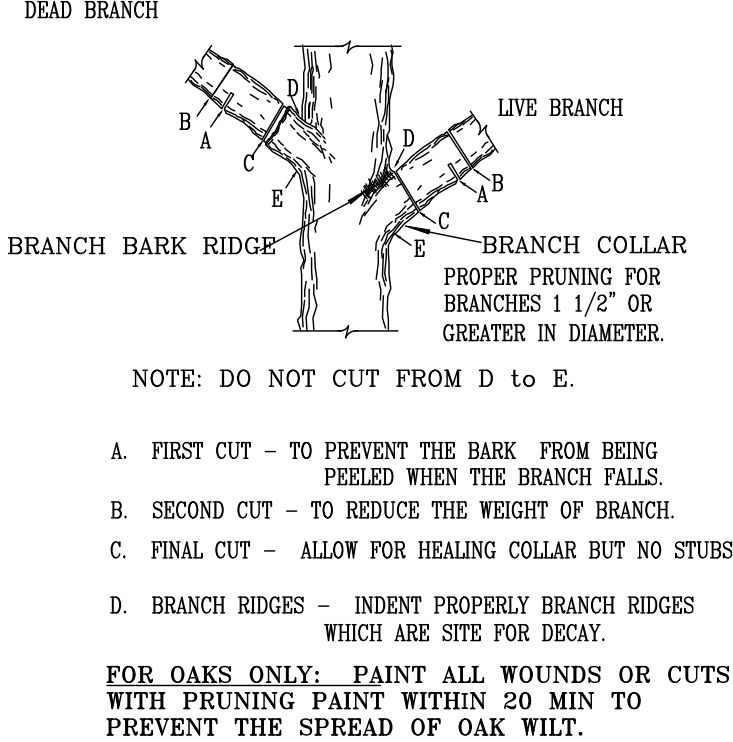
1.1.2 LEVEL I & FENCE PROTECTION

N. T. S.



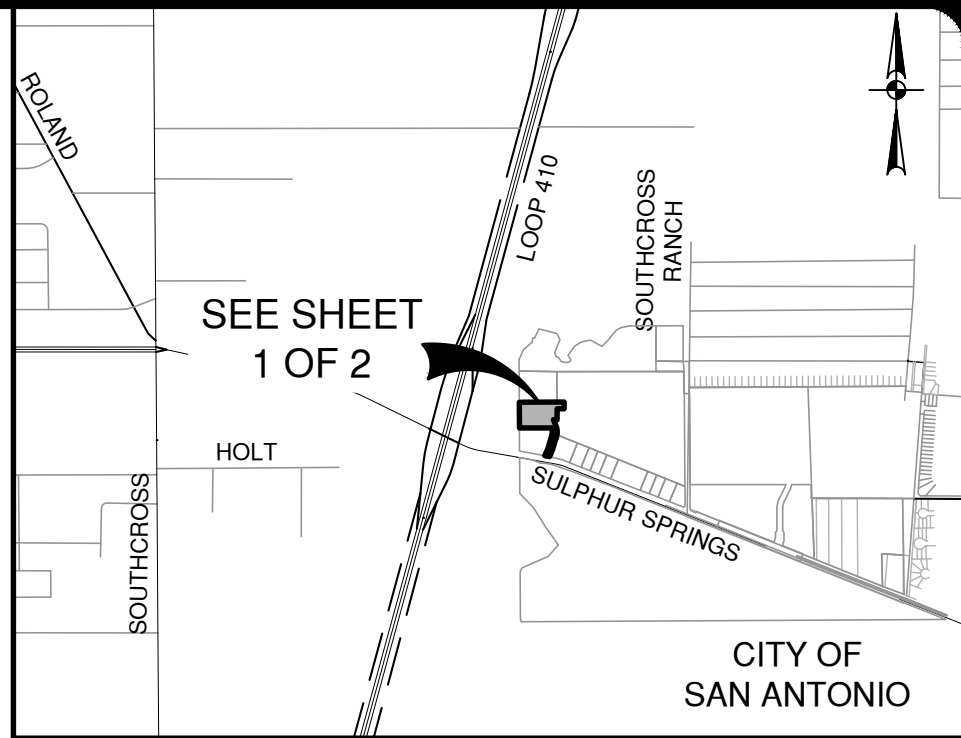
1.1.3 LEVEL II A FENCE PROTECTION

N. T. S.



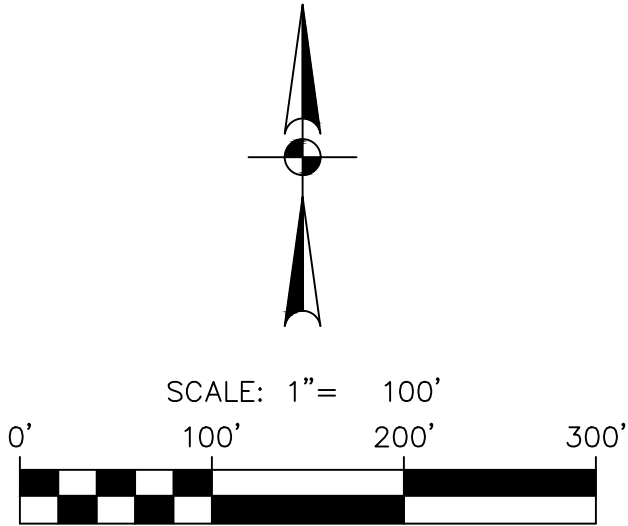
1.4 BRANCH PRUNING DETAIL

N. T. S.



LOCATION MAP

SCALE: 1"=200'



HERITAGE TREE CALCULATIONS

INCHES OF TREES REMOVED	= 30.5 INCHES
INCHES OF TREES TO REMAIN	= 0 INCHES
TOTAL INCHES OF TREES	= 30.5 INCHES

% OF TREES TO REMAIN 0 INCHES/30.5 INCHES = 0.0% TO REMAIN

2010 HERITAGE TREE PRESERVATION CALCULATION

TOTAL HERITAGE INCHES =0" PROTECTED PRESERVED + 30.5" PROTECTED REMOVED = 30.5"

REQUIRED HERITAGE PRESERVATION = 30.5" X 100% = 30.5"

MITIGATION REQUIRED =30.5" X 3:1 MITIGATION = 91.5"

2010 SIGNIFICANT TREE PRESERVATION CALCULATION

OUTSIDE FLOODPLAIN AND INSIDE FLOODPLAIN BUFFER

17,985 SF TOTAL EXISTING CANOPY

12,639 SF CANOPY PRESERVED (70.3%)

25% REQUIRED PRESERVED = 4,496 SF

FLOODPLAIN

54,280 SF OF EXISTING CANOPY

43,940 SF OF FLOODPLAIN PRESERVED

% PRESERVED = 81.0%

FLOODPLAIN BUFFER

7,176 SF OF EXISTING CANOPY

5,782 OF FLOODPLAIN PRESERVED

% PRESERVED = 80.6%

TREE PLANTING

REQUIRED TREES PLANTED PER LOT PER UDC (NOT COUNTED TOWARDS MITIGATION) = 2 MEDIUM SHADE TREES/LOT X 0 LOTS = 0 TREES
0 TREES @ 1.5" MIN = 0"

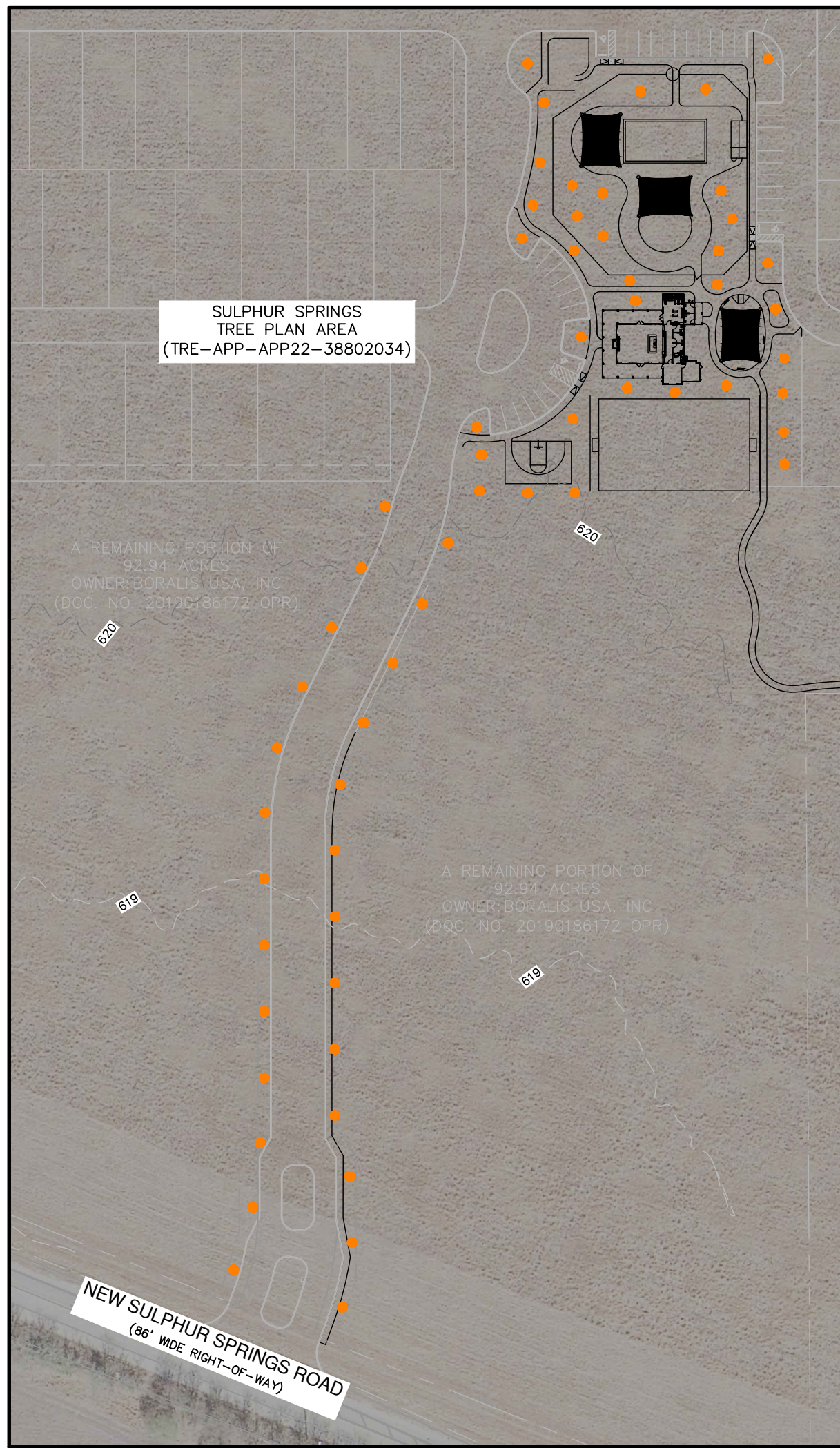
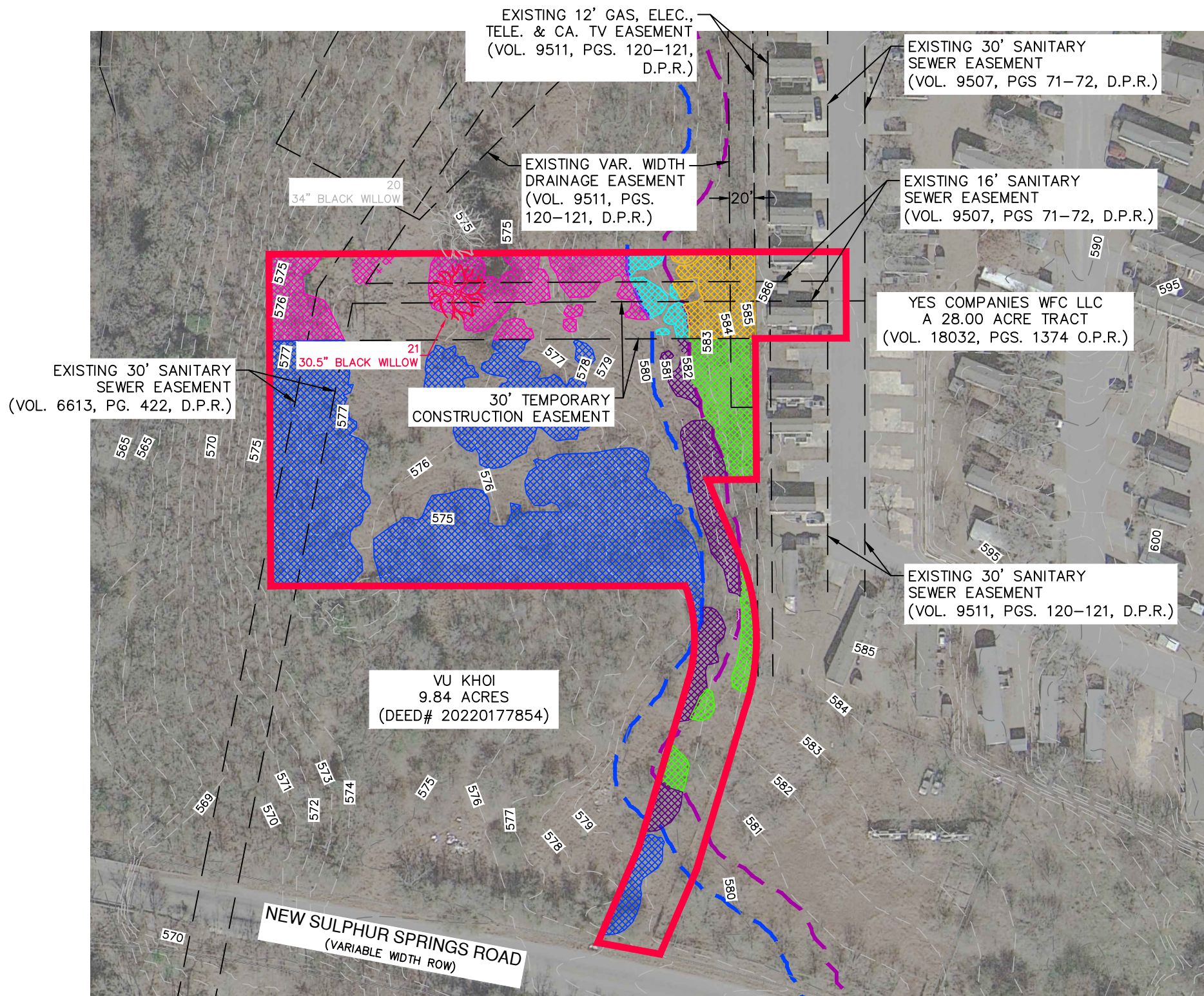
ADDITIONAL TREES PLANTED (COUNTED TOWARDS INCHES MITIGATION AND FINAL CANOPY REQUIREMENTS) (TREES ARE TO BE PLANTED WITHIN THE AMENITY CENTER AND ALONG THE ENTRY ROAD OF TRE-APP-APP22-38802034. SEE DETAIL "A" FOR TREE PLANTING LOCATIONS. TREES ARE TO BE PROVIDED WITH THREE (3) YEARS OF WATER MAINTENANCE TO ENSURE ESTABLISHMENT) = 61 TREES @ 1.5" MIN = 91.5"

TREE PRESERVATION NOTES

- ALL EXISTING TREES DENOTED ON THIS PLAN TO BE PRESERVED AS SHOWN AND PROTECTED AT THE ROOT PROTECTED ZONE (RPZ). THERPZ SHALL BE DETERMINED BY TREE SIZE (RECOMMENDED 1' RADIUS FROM TRUNK FOR EVERY 1" DIAMETER OF TRUNK AT 4.5' FROM GROUND) WITH A MINIMUM OF 50% OF THE RPZ.
- A (CHAIN LINK OR ORANGE MESH FENCE) BARRIER AROUND THE RPZ SHALL BE ERECTED AND MAINTAINED UNTIL CONSTRUCTION IS COMPLETED.
- RPZ SHALL BE SUSTAINED IN A NATURAL STATE AND SHALL BE FREE FROM VEHICULAR OR MECHANICAL TRAFFIC; NO FILL, EQUIPMENT, LIQUIDS, OR CONSTRUCTION DEBRIS SHALL BE PLACED INSIDE THE PROTECTIVE ZONE.
- THE RPZ SHALL BE COVERED WITH MULCH TO REDUCE MOISTURE STRESS.
- ANY DAMAGE DONE TO EXISTING TREE CROWNS OR ROOT SYSTEMS SHALL BE REPAIRED IMMEDIATELY. ALL WOUNDS TO TREES WILL BE PAINTED WITH PRUNING PAINT WITHIN 30 MINUTES AFTER DAMAGE. ROOTS EXPOSED DURING CONSTRUCTION OPERATIONS WILL BE CUT CLEANLY.
- THE PROPOSED FINISHED GRADE AND ELEVATION OF LAND WITHIN THE ROOT PROTECTION ZONE OF ANY TREES TO BE PRESERVED SHALL NOT BE RAISED OR LOWERED MORE THAN 3". WELLING AND RETAINING METHODS ARE ALLOWED OUTSIDE THE RPZ.
- THE RPZ SHALL REMAIN PERVIOUS, I.E. GROUNDCOVER OR TURF AT COMPLETION OF LANDSCAPE DESIGN.

NOTES:

- 2010 TREE ORDINANCE WITH TREE SURVEY - SIGNIFICANT TREES WITHIN EASEMENTS ARE UNPROTECTED, WITH THE EXCEPTION OF TREES WITHIN THE 100'-R FLOODPLAIN AND 30 FT FLOODPLAIN BUFFER. ALL SIGNIFICANT TREES WITHIN THE FLOODPLAIN AND BUFFER ARE PROTECTED.
- 2010 TREE ORDINANCE WITH TREE SURVEY - 100% HERITAGE TREES WITHIN EASEMENT ARE PROTECTED AND SHALL BE MITIGATED AT 3:1 RATIO.
- TREES LOCATED OUTSIDE THE LIMITS OF THE TREE SURVEY WILL REMAIN UNDISTURBED. THE ONLY HERITAGE TREES ALLOWED TO BE REMOVED ARE THE HERITAGE TREES LABELED IN THIS PLAN. SIGNIFICANT TREES CAN ONLY BE REMOVED IN THE "TO BE REMOVED" AREA OF THIS PLAN.
- SITE VEGETATION DESCRIPTION: VEGETATION ON THE SITE RANGES FROM OPEN AREAS TO DENSELY VEGETATED AREAS, INCLUDING BRUSH, CEDAR, OAKS AND ELMS.
- STREETSCAPE WILL BE REQUIRED ON ALL STREETS CLASSIFIED AS COLLECTOR OR HIGHER.
- VEGETATION SHOWN AS NEITHER PRESERVED NOR REMOVED IS ASSUMED TO BE OF INSIGNIFICANT SIZE.
- PLANTED TREES SHALL BE NATIVE MEDIUM SHADE TREES FROM APPENDIX "E" OF THE CITY OF SAN ANTONIO'S UNIFIED DEVELOPMENT CODE (UDC).
- THE DISTURBED AREA IS TO BE DRILL SEEDED WITH NATIVE SEED MIX WITH 85% ESTABLISHMENT ENSURED.



DETAIL "A"

SCALE: 1" = 100'

LEGEND

	HERITAGE TREE TO REMAIN WITHIN FLOODPLAIN
	PROTECTED HERITAGE TREE TO BE REMOVED
	HERITAGE TREE TO REMAIN
	FLOODPLAIN BUFFER TREES TO BE REMOVED
	FLOODPLAIN BUFFER TREES TO REMAIN
	HERITAGE TREE IN DECLINE (OR WITHIN RIGHT-OF-WAY NOT COUNTED TOWARDS PRESERVATION CREDIT OR MITIGATION)
	FEMA FLOODPLAIN
	30' FLOODPLAIN BUFFER
	EXISTING ELEVATION CONTOUR
	PROJECT LIMITS
	MEDIUM SHADE TREE (ADDITIONAL TREE REQUIRED FOR TRE-APP-APP22-38802379 MITIGATION)
	EXISTING TREE CANOPY IN SINGLE FAMILY TO BE PRESERVED (6,857 SF)
	EXISTING TREE CANOPY IN SINGLE FAMILY TO BE REMOVED (3,952 SF)
	EXISTING TREE CANOPY IN FLOODPLAIN TO BE PRESERVED (43,940 SF)
	EXISTING TREE CANOPY IN FLOODPLAIN TO BE REMOVED (10,340 SF)
	EXISTING TREE CANOPY IN FLOODPLAIN BUFFER TO BE PRESERVED (5,782 SF)
	EXISTING TREE CANOPY IN FLOODPLAIN BUFFER TO BE REMOVED (1,394 SF)

NO.	REVISION	DATE

PAPE-DAWSON ENGINEERS

SAN ANTONIO | AUSTIN | HOUSTON | FORT WORTH | DALLAS
2000 NW LOOP 410 | SAN ANTONIO, TX 78213 | 210.375.9000
TEXAS ENGINEERING FIRM #470 | TEXAS SURVEYING FIRM #1008860

SULPHUR SPRINGS OFFSITE SEWER SAN ANTONIO, TEXAS TREE PRESERVATION PLAN

PLAT NO.	--
JOB NO.	12677-04
DATE	FEBRUARY 2023
DESIGNER	JR
CHECKED	DW DRAWN JR
SHEET	1 OF 2

